



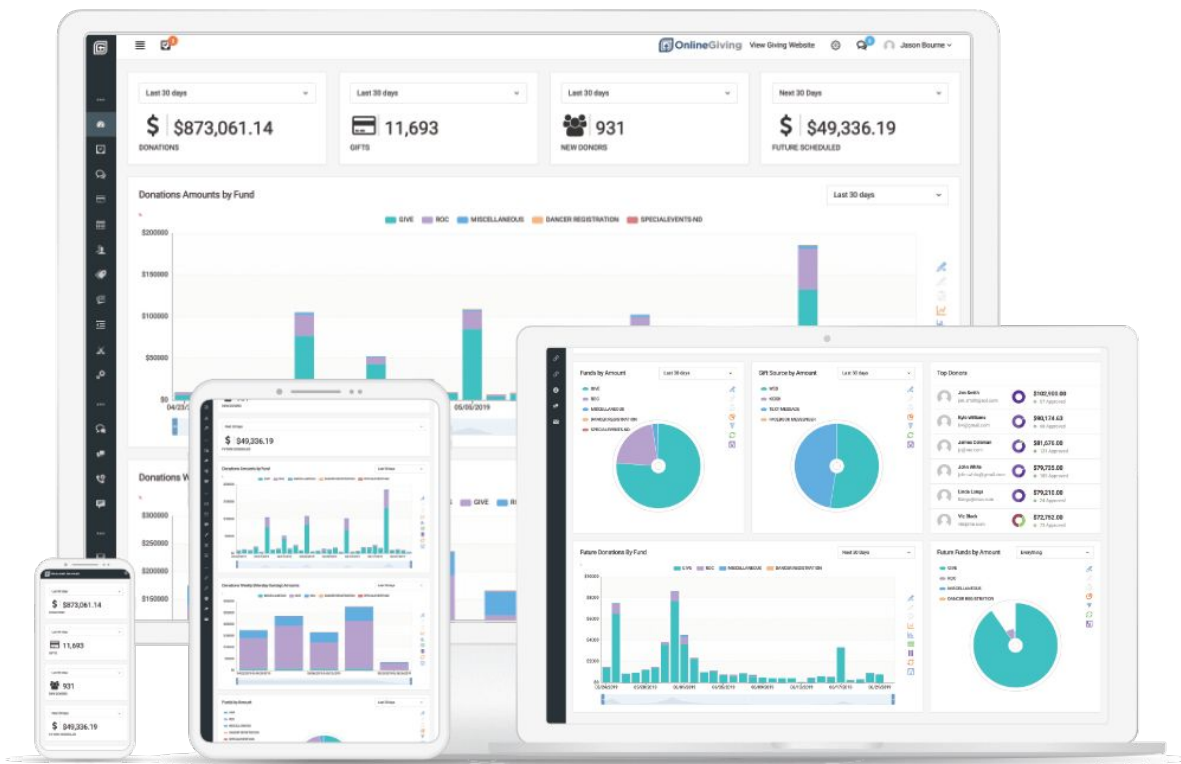
www.onlinegiving.org
(615) 206-4000

MinistryPlatform
2020 Integration Highlights



An Engaging Church Digital Giving Platform

- ✓ Innovative & Integrated Tools for Ministry.
- ✓ **12** Easy Ways to Give, Engineered for Growth.
- ✓ Deeply Integrated Custom Mobile Applications.
- ✓ Ministry Connected AI Powered Chatbot.
- ✓ Text Marketing Designed for Ministry.





Advanced MP Integration



Giving

A innovative donation platform engineered for growth.



Mobile App

A beautiful, engaging, integrated custom church app.



Text Marketing

A church texting platform to enhance communication.



Chatbot

A new vital platform for reaching and retaining guests.





MinistryPlatform Automatic Batching/Deposits

Automatically manage the creation and updating of MinistryPlatform batches and associated deposit records for donations. Batches are grouped by date and payment type into MinistryPlatform. Refunds are included and placed into their dedicated batch based on the date and payment type.





MinistryPlatform Automatic Refund Recording

Donation refund recording into MinistryPlatform is now automatic. Refund record sets are automatically recorded into MinistryPlatform when a donation refund or failed ACH donation is detected.






MinistryPlatform Invoice History & Payments

View Invoice History, including individual and household invoices. Make one-time or recurring payments towards invoices with balances using their OnlineGiving.org saved payment methods!

Invoice #1161


 **Boorn Household**
1600 Surf Estates Way
North Myrtle Beach SC 29582
South Congregation

Invoice #1161
Oct 26th 2018
[✓ Paid in Full](#)

Description	Event	QTY	Amount
Imagine Attenders Daniel Boorne 8435609531	Imagine Conference 07/13/2017 to 04/18/2020	1	\$0.00
	Imagine Conference 07/13/2017 to 04/18/2020	1	\$0.00
	Imagine Conference 07/13/2017 to 04/18/2020	1	\$25.00
	Total		\$25.00
	Amount Paid		\$25.00
	Balance Due		\$0.00

[✓ Paid in Full](#)

Invoice History

 **Boorn Household**
1600 Surf Estates Way
North Myrtle Beach SC 29582
South Congregation

Quick Filter
Select

Date

Inv #1196 - 12/12/2019	\$50.00
Imagine Attenders	✓ Paid in Full
Inv #1195 - 07/25/2019	\$35.00
Imagine Attenders	✓ Paid in Full



Giving

MinistryPlatform Donation Metrics

Using this new report, church financial and pastoral leadership can quickly gain a snapshot of their entire church stewardship health including cash, paper-check and digital giving.

- Breakdown of Giving by MP Program
- Breakdown of Giving by MP Payment Types
- Breakdown of New & Active MP Contacts
- Breakdown of Weekly Amounts
- Breakdown of Financial Growth
- Data is retroactive back 5 years.



Widgets



Part of the MinistryPlatform Life Suite, Widgets are mobile-friendly applications designed to appear on specific pages of your website. Widgets are a separate application that are fully integrated with MinistryPlatform. They add valuable functionality directly to your website, allowing guests to conduct business with your church in a safe manner that is instantly captured in the MinistryPlatform database.

Widgets offer a compelling, integrated, and customized experience for your users. For example, the [Group Finder](#) widget allows a user to easily search for and filter Groups relevant to their needs. Check out [Widget Church](#) to see some Widgets in action. And for a deep dive into the benefits of Widgets, see [Why Widgets?](#)

Group Finder

Campus
Any Campus

Key Word

Show Advanced

Search Groups



Baking Club
Churchwide Activities
Fridays @ 9:00 AM
Already Meeting

Come join other avid bakers in whipping up tasty creations. Treats created are used to love on the volunteers in



East Side Community Group
Ketchikan, AK
Thursdays @ 7:00 PM
Starts: Thu, Oct 3, 2019

Weekly Community Group that meets at the Christianson house. This group works through the Bible one book at a time.



Empty Nesters
South Congregation
Mondays @ 6:00 PM
Already Meeting

Come do life with other empty nesters in celebrating this season, supporting grown children and grandchildren and



Giving

MinistryPlatform Single Sign-on for Widgets

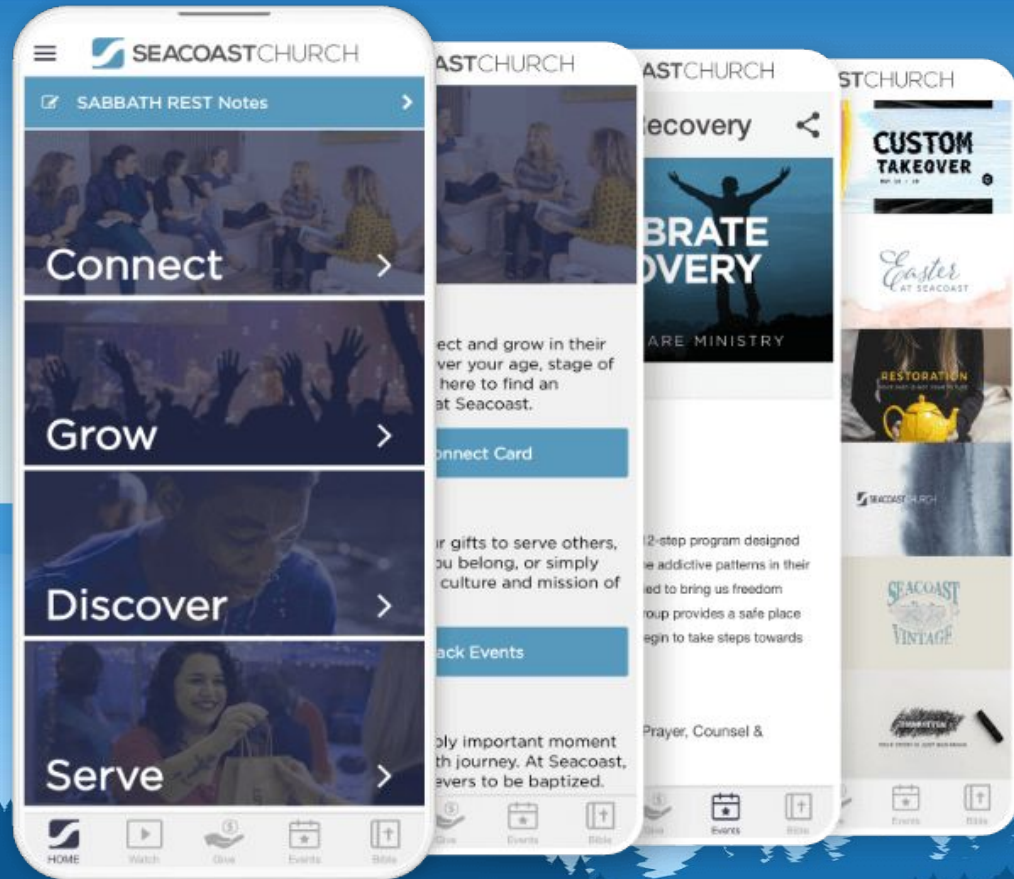
Single sign-on support added for MinistryPlatform website widgets. Securely pass authentication from church website using MP website widgets to OnlineGiving.org using single sign-on.



Mobile App

Engage your Church Ultimate Integration

Connect your congregation and reach new people with a custom church app engineered to engage, specifically designed to put your church message in the pocket of your community with deep integration.





MinistryPlatform Integrated Groups

Integrated Group Finder

Allow your congregation to quickly find the perfect group no matter if it's a small group or a Sunday school group.

Integrated My Groups

View upcoming group meetings and record event interest, take notes during a meeting, and more.

Integrated Group Management

Allow group leaders to view and take attendance. View contact information, add draft emails or text messages in bulk to members. Publish announcements, accept/reject inquiries and more.

Custom SQL Procedure Available

Optional custom SQL procedure available which boosts real time attendance recording speed for large groups by 90% over direct API integration.



Mobile App

MinistryPlatform Event Metrics

Authorized mobile application individuals can view existing Event Metrics and Create New Metrics from within the new feature.

Access events that are currently active that have started or recently ended within 12 hours.

Requires the mobile app individual to be signed in with a MinistryPlatform User account with a specific security role.

Church administrators can now view and take event headcount recordings directly from the mobile application.

Automatic support for all Metric Types including the default Headcount Metric.



Mobile App

MinistryPlatform FastPass Enhanced

Custom SQL Procedure Available

Optional custom SQL procedure available which boosts real time recording speed for large groups by 90% over direct API integration.

Enhanced Multi-Event Check-In Flow

Check your entire family into multiple events from a single check-in flow.

Preferred Campus Support

Automatically filters check-in events to those of the users preferred campus for churches with more than one campus.

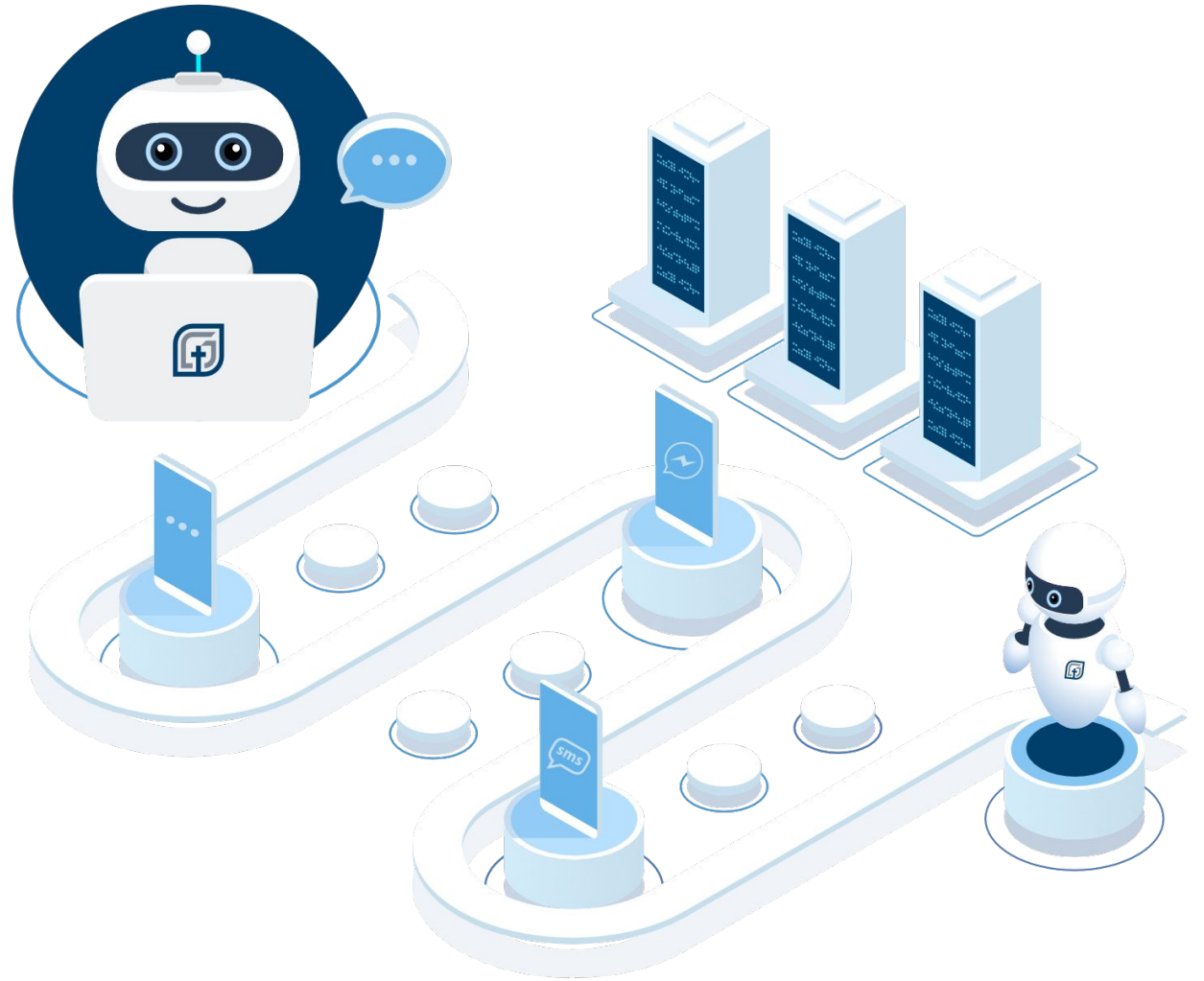
Allows Group Selection

For participations belonging to more than one event group, the check-in will prompt user to choose which group they desire.

Chatbot

Reach & Retain People. Connect Your Congregation.

Church chatbot is an innovative vital tool for reaching and retaining guests. Connect the congregation and grow your church. Text-based Christ acceptance, baptism sign-ups, connection cards, and more.

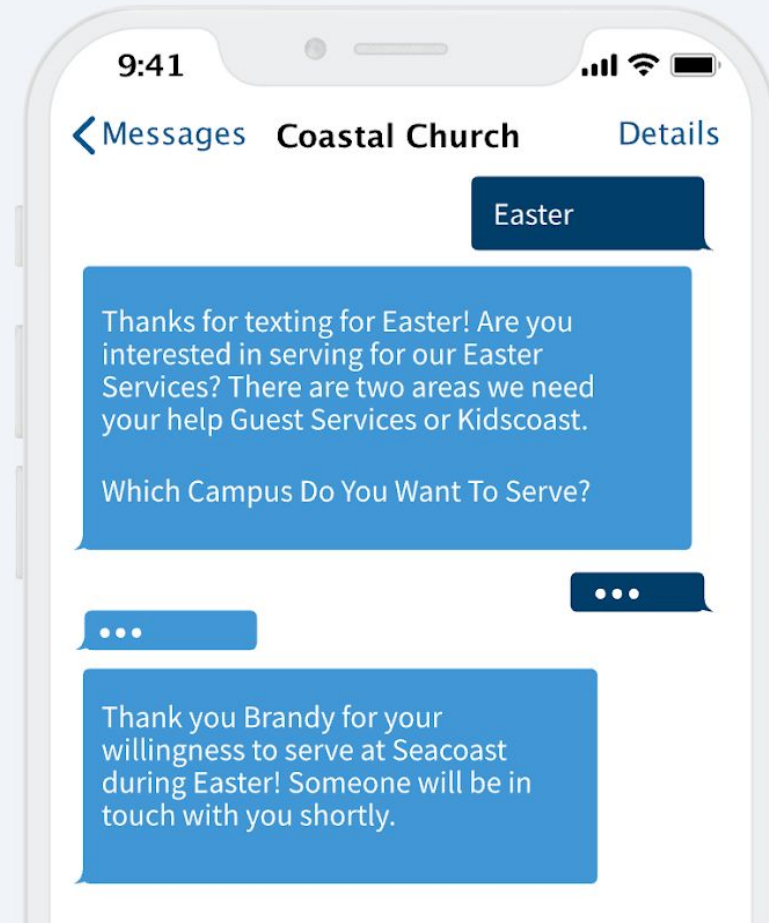


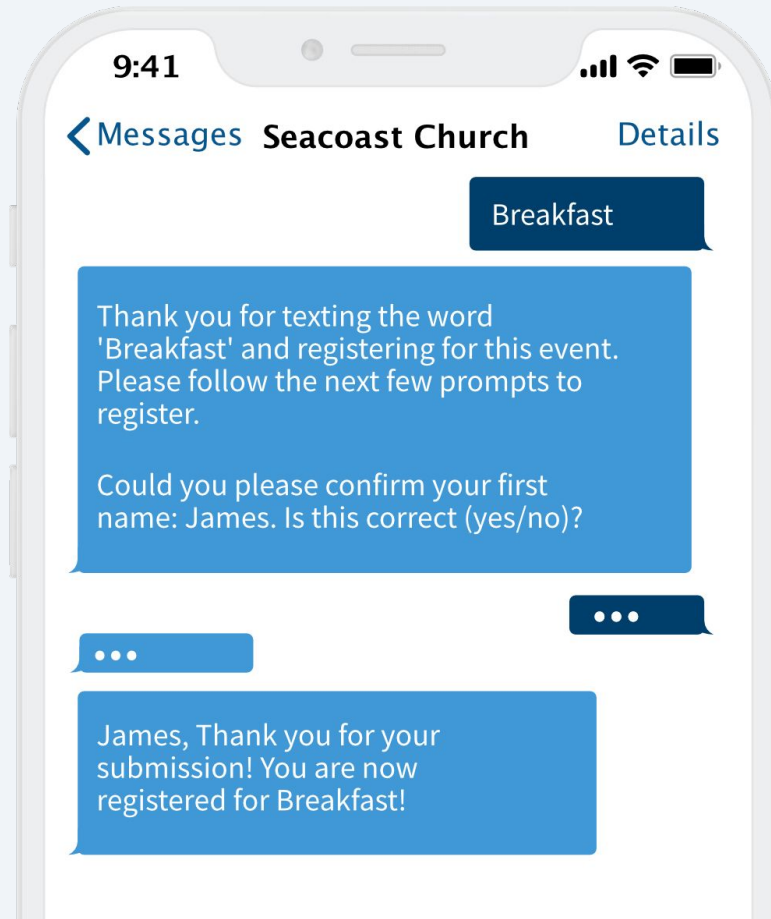


Chatbot

Volunteer Sign-Up

Use chatbots triggered based on keyword or phrase to allow church members sign-up to volunteer via conversation. Ask questions and collect data for an automated volunteer sign-up request.





Chatbot

Event Registration

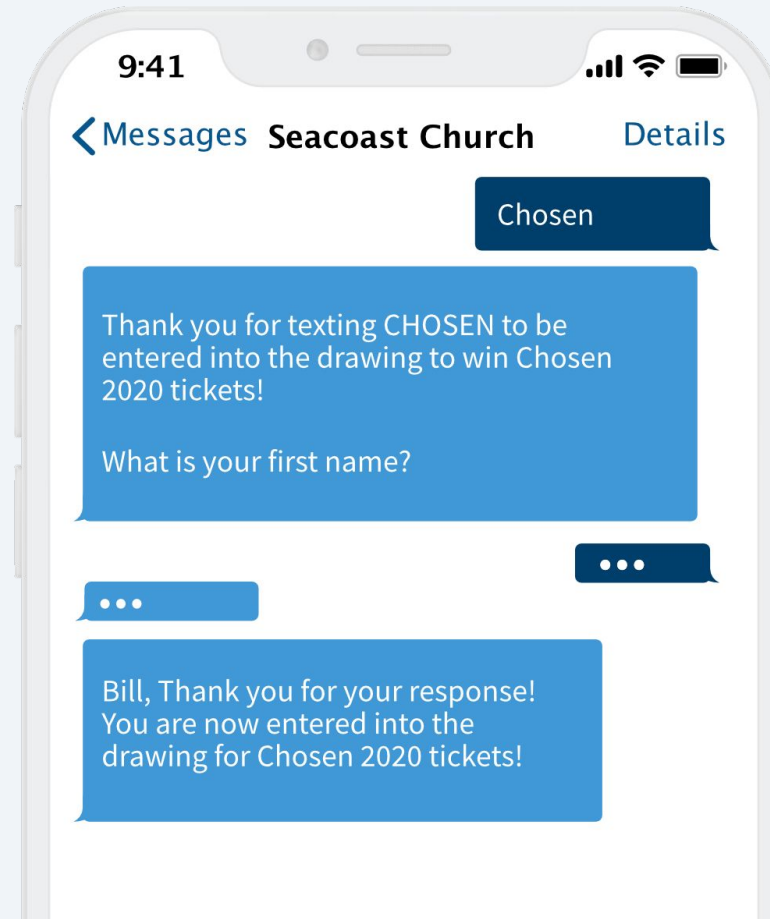
Use chatbots triggered based on keyword or phrase to allow church members to register for an event via conversation. Ask questions and collect data to complete an automated event registration.

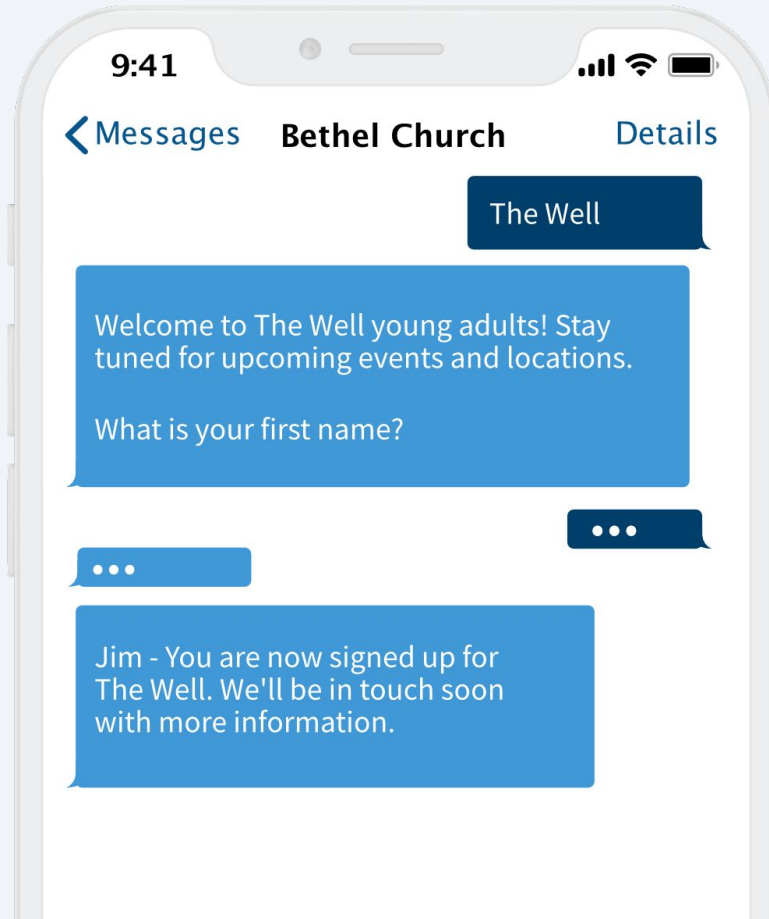


Chatbot

Contest Entry

Use chatbots triggered based on keyword or phrase to allow church members and visitors to enter a contest. Ask questions and collect data for an automated contest entry request.





Chatbot Group Sign-Up

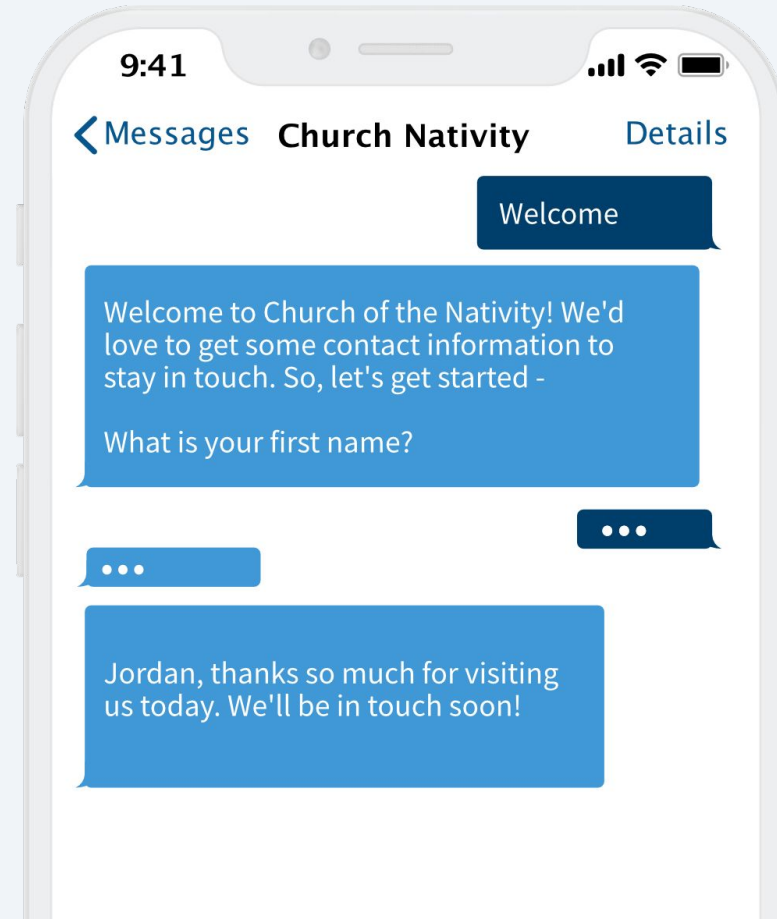
Use chatbots triggered based on keyword or phrase to allow church members and visitors to sign-up for a group. Ask questions and collect data for an automated group sign-up request.

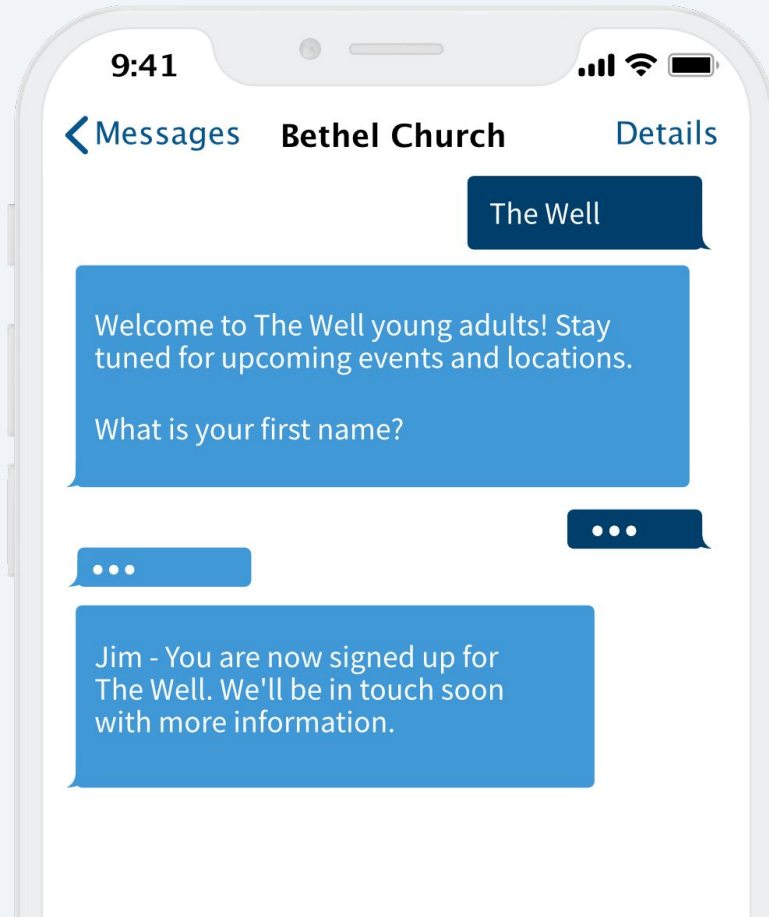


Chatbot

Connection Card

Use chatbots triggered based on keyword or phrase to allow church members and visitors to get connected. Ask questions and collect data for an automated connection card.





Chatbot **Baptism Sign-Up**

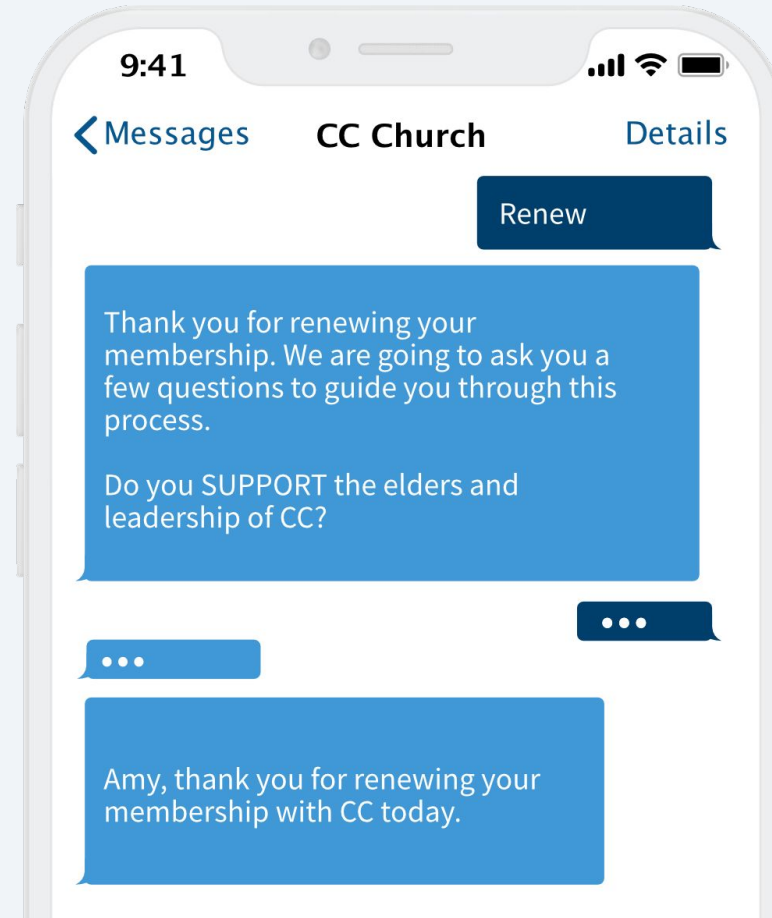
Use chatbots triggered based on keyword or phrase to allow church members to register for baptism. Ask questions and collect data for an automated baptism sign-up.

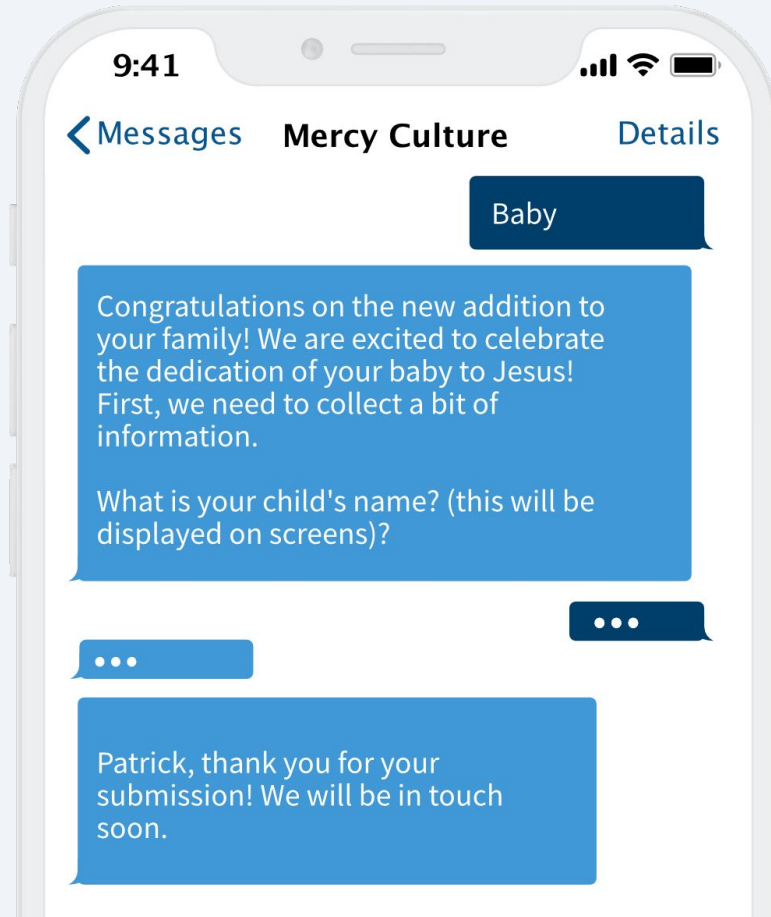


Chatbot

Membership Renewal

Use chatbots triggered based on keyword or phrase to allow church members to renew their membership. Ask questions and collect data for automated membership renewal.





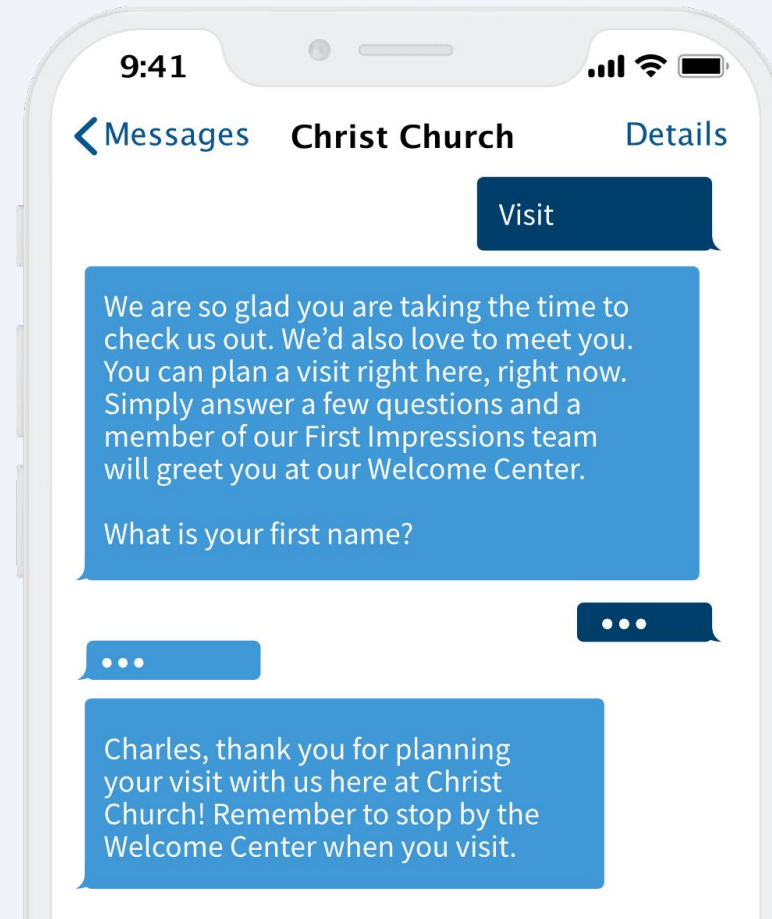
Chatbot **Baby Dedication**

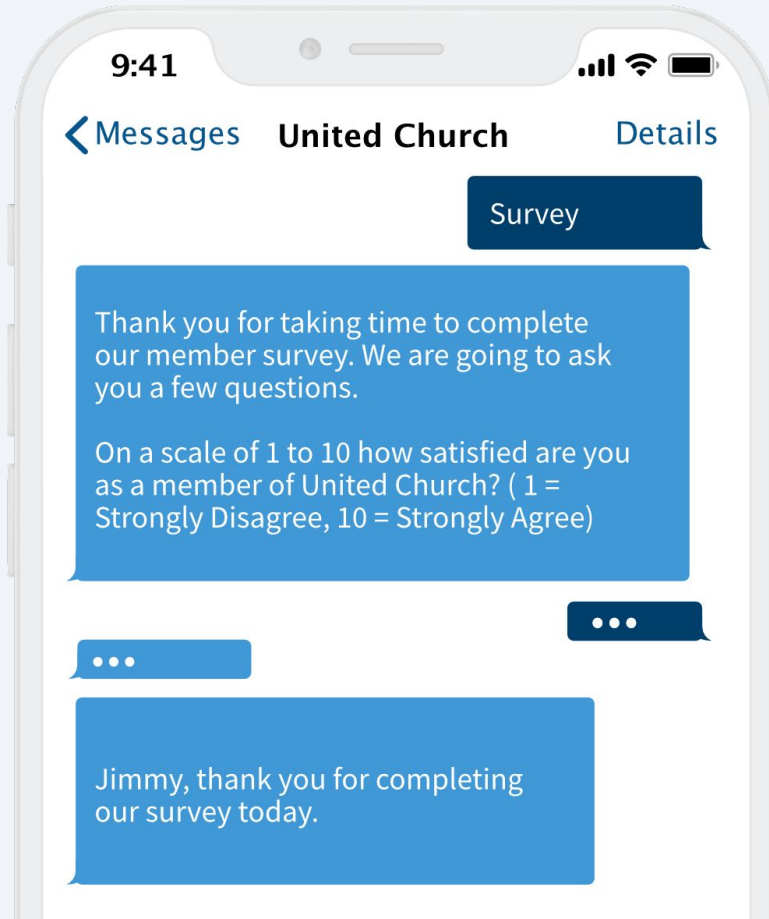
Use chatbots triggered based on keyword or phrase to allow church members to register for baby dedication. Ask questions and collect data for an automated baby dedication sign-up.

Chatbot

Plan a Visit

Use chatbots triggered based on keyword or phrase to allow church prospects to plan a visit. Ask questions and collect data for an automated new guest connection card.





Chatbot

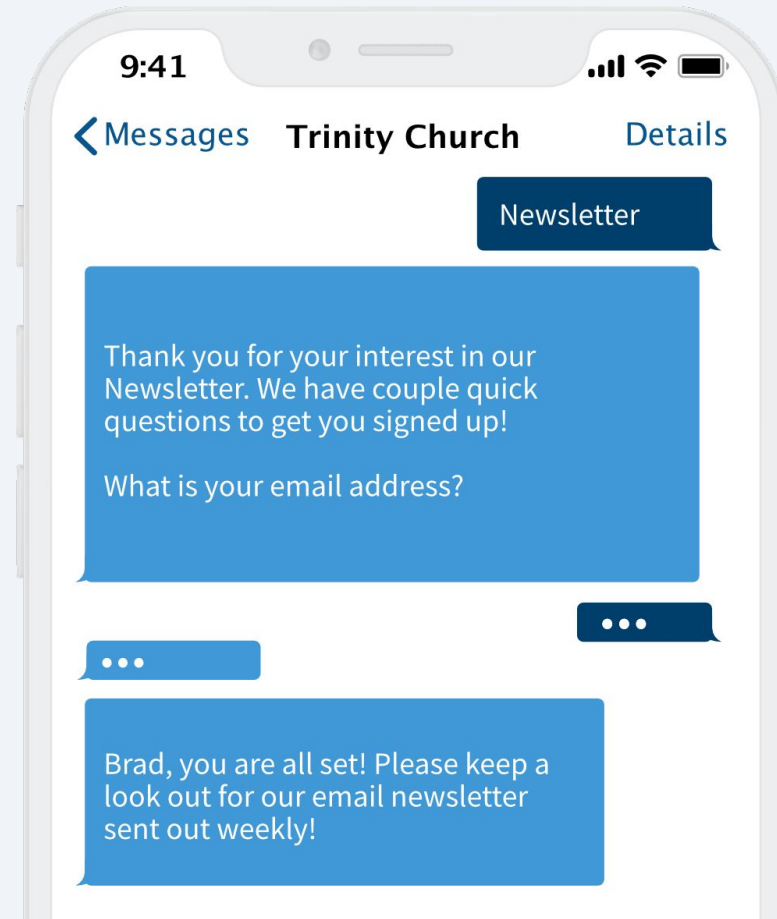
Survey & Feedback

Use chatbots triggered based on keyword or phrase to allow church members to complete a survey and submit feedback. Ask survey questions and collect data for a conversation based feedback submission.

Chatbot

Newsletter Sign-Up

Use chatbots triggered based on keyword or phrase to allow church members and visitors to join a newsletter. Ask survey questions and collect data for an opting into a digital newsletter.



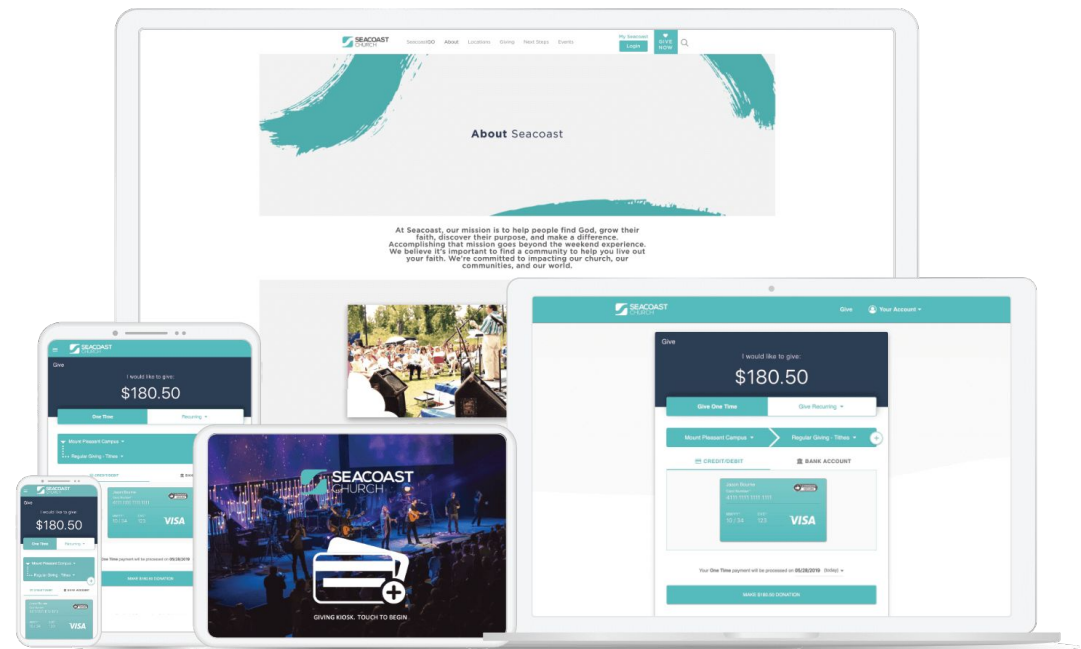
Get the Full Integration Details

Get an high level overview of the entire MinistryPlatform integration by visiting OnlineGiving.org > Integrations > MinistryPlatform.

The screenshot displays the OnlineGiving website's 'MinistryPlatform Integration' page. At the top, the navigation bar includes the OnlineGiving logo, links for Products, Integrations, Blog, Resources, Pricing, Sign In, and a 'Get Started' button. The main content area features a section titled 'MinistryPlatform Integration' with a circular logo and a sub-section 'What is MinistryPlatform?' explaining it as an enterprise class data platform. Below this is a call to action: 'Increase Giving. Engage your church.' with a 'Schedule a Demo' button and the phone number (615) 206-4000. A section titled 'OnlineGiving.org MinistryPlatform Integration Features' lists 'Integrated Donation Recording' and 'Integrated Refund Recording', both marked with green checkmarks. On the right side, a 'Support & Resources' sidebar contains a search bar and a list of links including 'Take a Tour', 'Submit Request', 'Getting Started' (with sub-links for sign up, billing, and FAQs), 'Control Panel User Guide' (with sub-links for access, task manager, message inbox, etc.), and 'ChMS User Guide' (with sub-links for getting started, breeze ChMS, etc.).

Nurture your Community

The Online Giving platform will nurture your community by providing ministry tools that increase generosity, simplify administrative tasks and connect your congregation.



Increase Generosity

Increase your growth independent of weekly attendance with recurring.



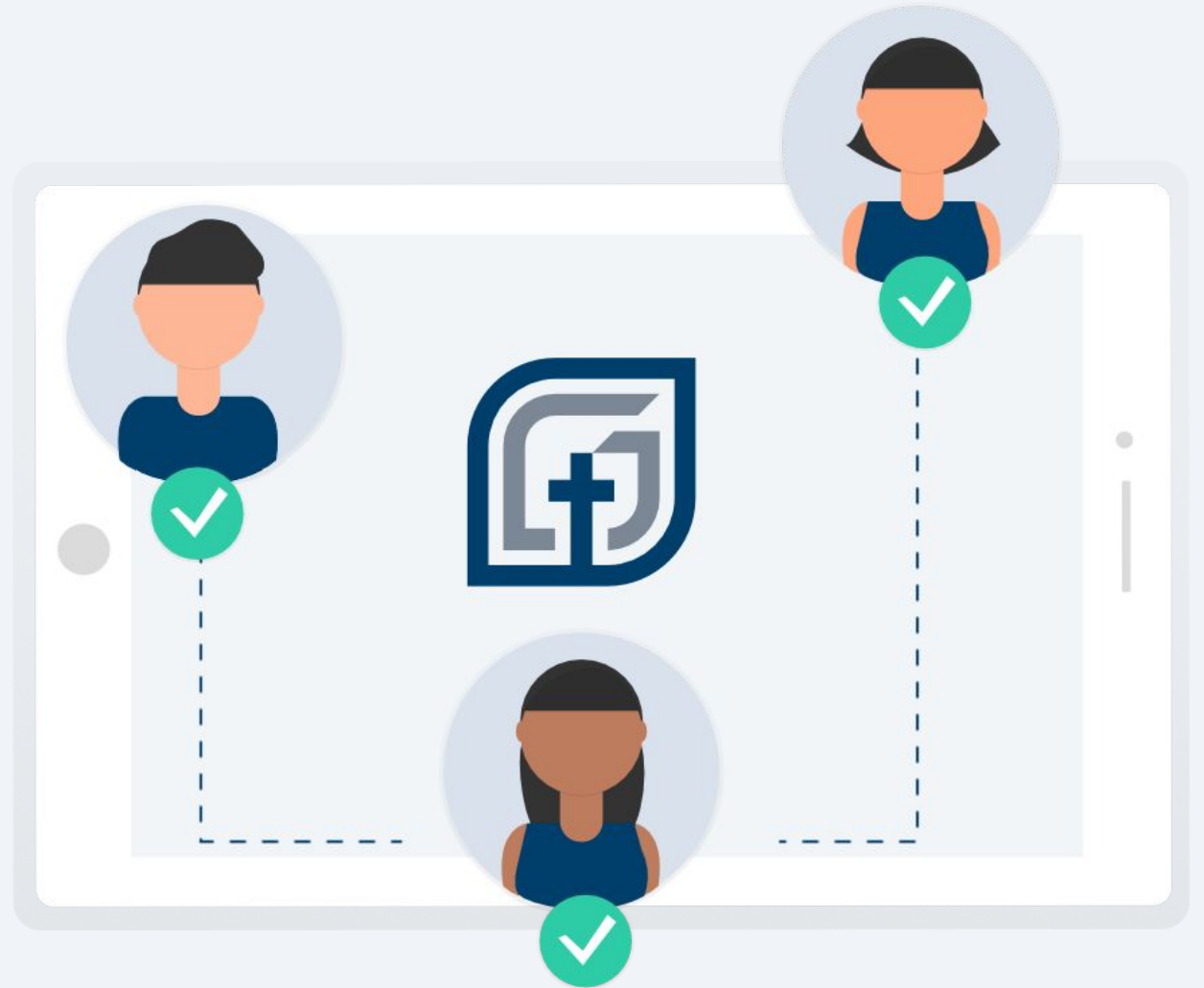


Simplify Administrative Tasks

Reduce your workload with our advanced ChMS integrations that automate administrative processes.

Connect your Congregation

Connect the congregation and grow your church with engaging giving and innovative texting.





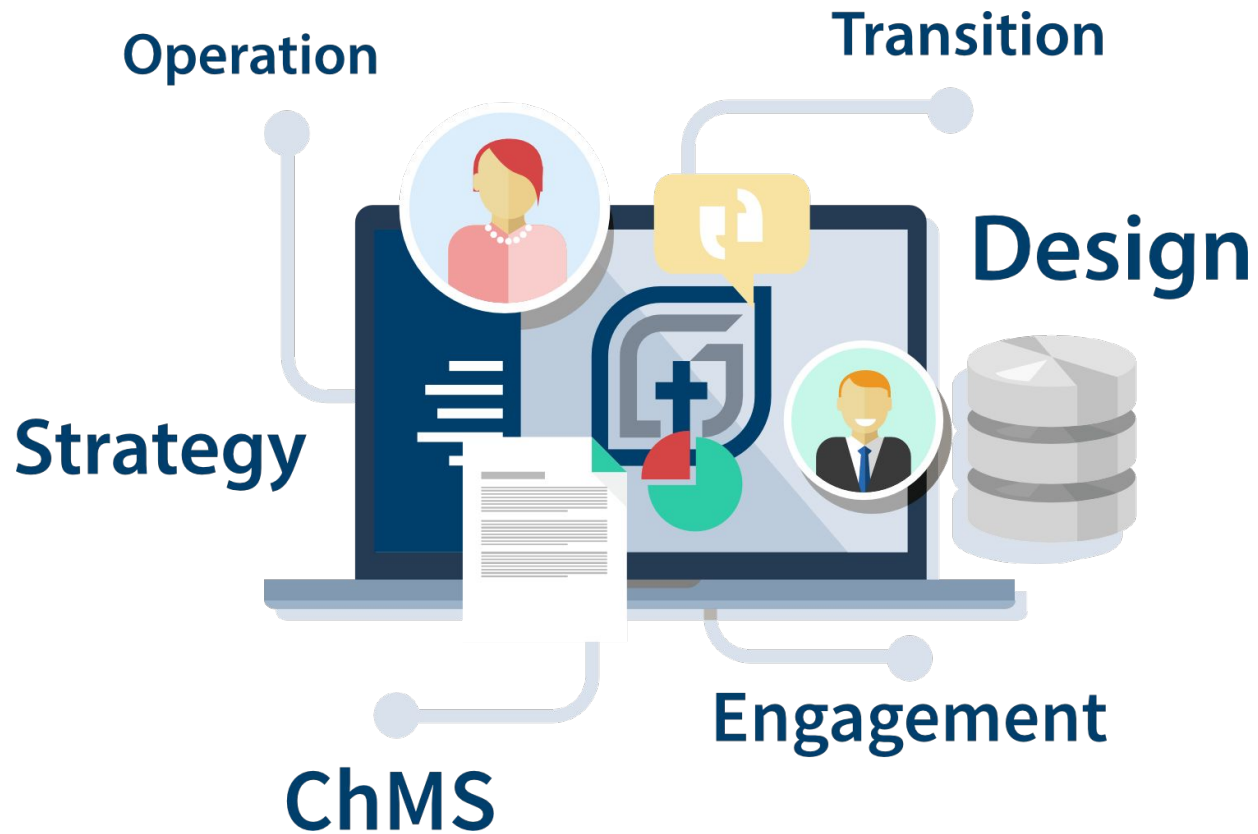
Product Training

Schedule expert on-demand live video screenshare training with your creative and financial team for our entire platform.

Technical Support

Receive an answer to your product question and get speedy technical support Monday-Friday. We are online on Sunday mornings to address emergencies.





Continual Upgrades

Our experts never stop building new and wonderful customizable features for ministry. Gain access to a continually updated feature set.



www.onlinegiving.org
(615) 206-4000